



CLEVE HILL SOLAR PARK

RESPONSES TO THE EXA'S WRITTEN QUESTIONS - APPENDICES

Appendix 15 – Updated Photomontages at Viewpoint 22 at Years 1, 5 and 10

June 2019
Revision A

Document Reference: 10.1.1
Submitted: Deadline 2

www.clevehillsolar.com



CLEVE HILL
SOLAR PARK



View at a comfortable arms length

OS reference: 603457 164017
Approximate AOD: 1.2m AOD
Direction of view: 1.57°
Distance to CLSA: 0m

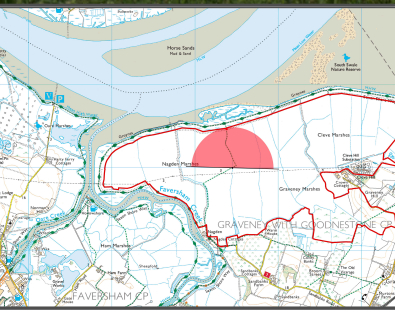
Horizontal field of view: 180°
Principal distance: 500mm
Paper size: 1682 x 297 mm
Correct printed image size: 1640 x 220 mm

Camera: Nikon D5
Lens: 50mm f1.8D
Camera height: 1.6m
Date and time: 09/07/2018 13:10

CLSA - Core Landscape Study Area



Photomontages at Year 10 - Summer - **Figure: 7.133**
Viewpoint 22: Public Right of Way (ZR485) through Site (Looking north)



Cleve Hill Solar Park Environmental Statement



View at a comfortable arms length

OS reference: 603457 164017
Approximate AOD: 1.2m AOD
Direction of view: 181.57°
Distance to CLSA: 0m

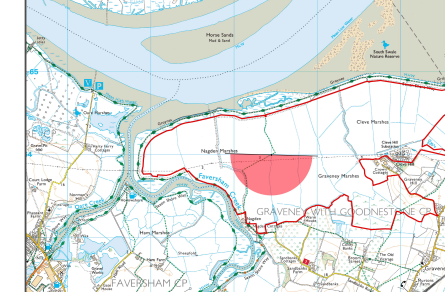
Horizontal field of view: 180°
Principal distance: 500mm
Paper size: 1682 x 297 mm
Correct printed image size: 1640 x 220 mm

Camera: Nikon D5
Lens: 50mm f1.8D
Camera height: 1.6m
Date and time: 09/07/2018 13:10

CLSA - Core Landscape Study Area



Photomontages at Year 10 - Summer - **Figure: 7.134**
Viewpoint 22: Public Right of Way (ZR485) through Site (Looking south)



Cleve Hill Solar Park Environmental Statement